



SMART INSTRUMENTS

Really smart!

**Intelligent Quality
from STARLAB**



- /// Robust
- /// Reliable
- /// Easy to use
- /// Small footprint
- /// Maintenance free



Editorial



SMART INSTRUMENTS

STARLAB has become a recognised name as a manufacturer and supplier of high quality plastic consumables for a wide range of applications in liquid handling, such as the TipOne® pipette tip system.

Following customer requests we have extended our portfolio of benchtop equipment. Our Smart Instruments are robust, reliable, easy to use, maintenance free and fit conveniently on every bench.

Our Smart Instruments are designed for repeated daily use for a range of laboratory applications like blending, temperature control and centrifugation.

Why are they called Smart Instruments? Because these instruments provide IQ – Intelligent Quality for your laboratory applications:

- /// Robust
- /// Reliable
- /// Easy to use
- /// Small footprint
- /// Maintenance free



STARLAB's Smart Instruments* have a 2-year warranty.

Small, but powerful! Smart Instruments.
Your STARLAB Team

STARLAB Quality



Trust is good – Certification is better!
As an ISO 9001 and ISO 13485 certified

company, working procedures and processes at STARLAB are checked and audited regularly. Additionally, the quality of our products is continuously monitored.

*Excluding the Mini Fuge (p14) and AirClean PCR Cabinets (p16–17) which have one-year warranty.

Contents

STIRRERS

Magnetic Stirrer	4
Magnetic Stirrer with Heating	4

MIXERS

Vortex	5
Vortex IR	6
Tube Roller	7
Microplate Mixer	8
Rotator Mixer RM-Multi 1	9

SHAKERS

Rocking Shaker	10
3D Rocking Shaker	10
Orbital Shaker	11

DRY BATH INCUBATORS

Mini Dry Bath Incubator	12
Single Block & Dual Block Dry Bath	13

CENTRIFUGES

Mini Fuge	14
Plate Centrifuge	15

PCR CABINETS

AirClean® PCR Cabinets	16–17
------------------------------	-------

Magnetic Stirrer

N2400-2010



Simple but effective!

Ideal for applications such as buffer preparation, this value for money magnetic stirrer has a compact footprint. Easy to use and built to last, the sturdy construction guarantees reliable stirring with the adjustable stirring speed. The unit is supplied with a 40 mm magnetic stir bar.

Specifications	
Speed Range	0 – 1500 rpm
Max. Stirring Volume	3 l
Permissible Ambient Temperature	4 – 40 °C
Permissible Relative Humidity	< 80 %
Plate Diameter	135 mm
Power	15 W
Voltage	100 – 240 V
Frequency	50/60 Hz
Weight	0.9 kg
Dimensions (WxDxH)	155 × 215 × 75 mm

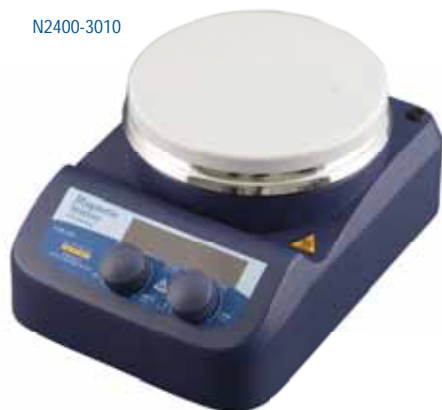
Features

- /// Speed control
- /// Includes 40 mm stir bar
- /// Compact design
- /// Robust construction

Magnetic Stirrer		
Cat. No.	Description	Pack Size
N2400-2010	Magnetic Stirrer	1

Magnetic Stirrer with Heating

N2400-3010



Stir up some heat!

This magnetic stirrer has very fast temperature ramping to help save your time. The ceramic-coated plate ensures an even temperature and has a high resistance to chemicals. It is ideal for many applications including the preparation of solvents at high temperatures. Supplied with a 40 mm magnetic stir bar, the stirrer is easy to use and has a clear LED display showing temperature and speed.

Specifications	
Speed Range	100 – 1500 rpm
Max. Stirring Quantity	3 l
Temperature Range	Ambient to 280 °C with 1 °C increments
Permissible Ambient Temperature	4 – 40 °C
Permissible Relative Humidity	< 80 %
Plate Diameter	135 mm
Power	515 W (with heating) 15 W (without heating)
Voltage	200 – 240 V
Frequency	50/60 Hz
Weight	1.4 kg
Dimensions (WxDxH)	155 x 215 x 100 mm

Features

- /// Speed and temperature controls
- /// Includes 40 mm stir bar
- /// Fast temperature ramping
- /// LED display
- /// Hotplate safety warning alert
- /// Chemically-resistant ceramic-coated plate

Magnetic Stirrer with Heating		
Cat. No.	Description	Pack Size
N2400-3010	Magnetic Stirrer with Heating	1

Vortex



N2400-6010
or N2400-6110

Specifications	
Speed Range	0 – 2500 rpm
Permissible Ambient Temperature	4 – 40 °C
Permissible Relative Humidity	< 80 %
Operating Modes	Two: touch and continuous
Type of Movement	Orbital
Orbital Diameter	4 mm
Power	60 W
Voltage	220 – 230 / 110 – 120 V
Frequency	50/60 Hz
Weight	3.5 kg
Dimensions (WxDxH)	127 x 130 x 160 mm

Simple and smart!

An economical vortex for quick and convenient mixing of small sample volumes. Supplied with a universal cup for tubes or vessels up to 30 mm, the vortex also has a range of accessories to allow the mixing of various tube sizes as well as plates.

The variable speed provides the gentle mixing of samples up to higher speeds for vigorous mixing and resuspending cells or pellets. Anti-slip feet ensures stability on the bench during mixing.

Features

- /// Variable speed control
- /// Two operating modes: continuous and touch
- /// Anti-slip feet
- /// Wide range of accessories
- /// Small footprint

Vortex		
Cat. No.	Description	Pack Size
N2400-6010	Vortex with EU plug	1
N2400-6110	Vortex with UK plug	1
Accessories		
N2400-6011	Replacement Universal Cup for Tubes up to 30 mm Ø	1
N2400-6012*	Tube Adapter for 18 x 1.5/2.0 ml Microcentrifuge Tubes up to 10 mm Ø (Use in Combination with N2400-6015)	1
N2400-6013*	Tube Adapter for 8 x 15 ml Centrifuge Tubes up to 16 mm Ø (Use in Combination with N2400-6015)	1
N2400-6014	Adapter for 96-Well Microtitre Plates	1
N2400-6015	Vortex Adapter Plate for use with N2400-6012 and N2400-6013	1

* N2400-6012 and N2400-6013 can only be used as an attachment in combination with N2400-6015. N2400-6012 and N2400-6013 can also be used as an attachment on the Microplate Mixer (see page 8) in combination with its adapter N2400-8043.

STARLAB TubeOne® microcentrifuge tubes



For more information about our comprehensive range of tubes for mixing please visit our website www.starlabgroup.com

Vortex IR



N2400-0001

Simple, but revolutionary!

The Vortex IR incorporates an optional infrared (IR) motion detector which automatically starts the vibration when a tube crosses the sensor field.

The variable vibration speed allows low speeds for the gentle mixing of samples or higher speeds for vigorous vortex mixing and the resuspending of cells or chemical pellets.

Features

- ✦ Ergonomic, low-profile design and anti-slide feet for bench stability
- ✦ 'Sensor' mode: infrared detects the presence of the test tube and automatically starts vibration
- ✦ 'Continuous' mode: with the possibility to combine with the wide range of accessories to suit the most diverse of needs
- ✦ No pressure needed to maintain vibration
- ✦ Use in cold rooms or incubators

Specifications	
Speed Range	0 – 3000 rpm
Speed Setting	Analogical
Speed Control	Electronic
Temperature Range	4 °C – 40 °C
Operating Modes	Two: sensor and continuous
Type of Movement	Orbital
Orbital Diameter	4.5 mm
Max. Load	0.5 kg
Unit Material	Epoxy painted zinc alloy
Power	30 W
Voltage / Frequency	90 – 260 V / 50 – 60 Hz
Safety	Electronic Protection Degree CEI EN 60529: IP42
Weight	2.4 kg
Dimensions (WxDxH)	180 x 220 x 70 mm



The Vortex IR can be set to Sensor Mode so the infrared detects the presence of the tube and automatically starts vibrating

Vortex IR		
Cat. No.	Description	Pack Size
N2400-0001	Vortex IR	1
N2400-1008	Replacement Cup for Single Test Tube	1

The Vortex IR is supplied with a cup (N2400-1008) for single test tube (see main image).

Vortex IR Accessories



For 19 x 1.5 ml Microcentrifuge Tubes
Cat. No: N2400-1001



For 5 x 15 ml (16 mm Ø) Centrifuge Tubes
Cat. No: N2400-1002



For 4 x 50 ml (29 mm Ø) Centrifuge Tubes
Cat. No: N2400-1003



For Microtitre Plates
Cat. No: N2400-1004



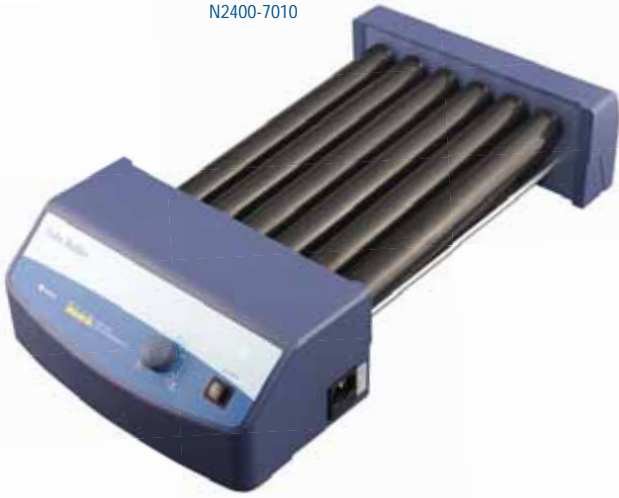
Universal Rubber Attachment (50 mm Ø)
Cat. No: N2400-1005



Customisable Soft Foam Attachment
Cat. No: N2400-1006

Tube Roller

N2400-7010



Rock and roll!

Simultaneous rolling and tilting movements ensures thorough mixing. The tube roller is built for continuous operation and is suitable for applications such as hybridisation. The sturdy and robust construction and variable speed control will make this your tube roller of choice.

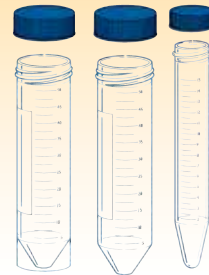
Features

- /// Simultaneous rolling and tilting motion
- /// Continuous operation
- /// Speed control
- /// Six rollers to hold a load up to 4 kg

Specifications	
Speed Range (orbital)	0 – 70 rpm
Permissible Ambient Temperature	4 – 40 °C
Permissible Relative Humidity	< 80 %
Max. Load	4 kg
Number of Rollers	6
Size of Rollers (LxØ)	280 x 30 mm
Power	25 W
Voltage	100 – 240 V
Frequency	50/60 Hz
Weight	4.5 kg
Dimensions (WxDxH)	260 x 460 x 120 mm

Tube Roller		
Cat. No.	Description	Pack Size
N2400-7010	Tube Roller	1

STARLAB Centrifuge Tubes



STARLAB Centrifuge Tubes are made from clear polypropylene with blue HDPE screw caps. For more information visit our website www.starlabgroup.com

Microplate Mixer

N2400-8040



Compact and versatile!

This microplate mixer is ideal for the mixing and shaking of standard microtitre plates. It can hold either one or two plates, depending on the attachment being used, and can also mix tubes with the special tube adapter accessories. The stepless, variable vibration speed is excellent for applications such as the resuspending of pellets. The small footprint saves space on your bench.

Features

- /// Compact design
- /// Easy to use
- /// Speed control
- /// Various accessories for microtitre plates and tubes

Specifications	
Speed Range	0 – 1500 rpm
Permissible Ambient Temperature	4 – 40 °C
Permissible Relative Humidity	< 80 %
Max. Load	0.5 kg
Type of Movement	Orbital
Orbital Diameter	4.5 mm
Power	20 W
Voltage	100 – 240 V
Frequency	50/60 Hz
Weight	3 kg
Dimensions (WxDxH)	150 x 260 x 80 mm

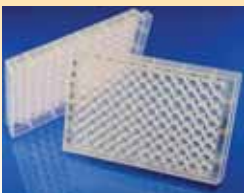
Microplate Mixer		
Cat. No.	Description	Pack Size
N2400-8040	Microplate Mixer	1
Accessories		
N2400-8041	Replacement Attachment for One Plate	1
N2400-8042	Microtitre Plate Attachment for Two Plates	1
N2400-8043	Microplate Mixer Adapter Plate for use with N2400-6012 and -6013	1
N2400-6012*	Tube Adapter for 18 x 1.5/2.0 ml Microcentrifuge Tubes up to 10 mm Ø (Use in Combination with N2400-8043)	1
N2400-6013*	Tube Adapter for 18 x 15 ml Centrifuge Tubes up to 16 mm Ø (Use in Combination with N2400-8043)	1

Microplate Mixer is supplied with an attachment for one plate (N2400-8041)

*N2400-6012 and N2400-6013 can only be used as an attachment in combination with N2400-8043.

N2400-6012 and N2400-6013 can also be used with the Vortex (see page 5) in combination with its adapter N2400-6015.

STARLAB PlateOne® Plates



See our comprehensive range of consumables for the laboratory, including PlateOne® deepwell and microplates by visiting our website at www.starlabgroup.com

Rotator Mixer RM-Multi 1



Features

- /// Effective vertical mixing
- /// Programmable
- /// Three different motions
- /// Variable speed and timer
- /// Easy to operate
- /// LCD display
- /// Low profile and small footprint

Mix it up!

Compact and multifunctional, the programmable Rotator Mixer RM-Multi 1 provides thorough mixing of microtubes with consistent results. The rotator is designed for mixing applications including cell suspensions, incubations, extraction procedures, gel washing and precipitations.

RM-Multi 1 has three different motions – vertical rotation, reciprocal motion and vibration – which can be used separately or combined, as well as variable speed and timer function.

Supplied with a standard platform for 26 tubes up to 15 mm diameter (eg. 1.5 ml, 2.0 ml and 15 ml tubes), STARLAB's RM-Multi 1 is a practical aid for your daily mixing tasks. An optional platform, for five tubes up to 30 mm diameter (eg. 50 ml tubes) and 12 tubes up to 15 mm diameter, is also available.



Vertical Rotation

360 ° vertical motion for a time period
0 – 250 seconds, or non-stop



Reciprocal Motion

Direction of platform changes in turns
(turning angle 1 – 90° for 0 – 250 seconds,
or non-stop)



Vibration

Direction of platform changes in turns
(see reciprocal motion) plus additional
vibration (turning angle 1 – 5°
for 1 – 5 seconds)



Pause

Direction of platform changes in turns,
including a temporary motion stop of
1 – 5 seconds (only in conjunction with
reciprocal motion)

Specifications	
Speed	1 – 100 rpm
Turning Angle	Reciprocal Mode: 1 – 90 ° (increment 1 °) Vibration Mode: 1 – 5 ° (increment 1 °)
Timer	Auto switch-off: 1 min – 24 hours Vertical or Reciprocal Mode: 1 – 250 seconds, or non-stop Vibration mode: 1 – 5 seconds
Pause	Reciprocal Mode: 1 – 5 seconds
Max. Load	0.5 kg
Power Supply	(External) DC 12 V
Input Current	1.25 A
Weight	1.8 kg
Dimensions (WxDxH)	365 x 195 x 155 mm

Rotator Mixer		
Cat. No.	Description	Pack Size
N2400-5000	Programmable Rotator Mixer RM Multi-1 (supplied with Standard Platform for 26 Tubes up to 15 mm Diameter)	1
Accessories		
N2400-5103	Platform for 5 x 50 ml Tubes and 12 x 1.5 ml to 15 ml Tubes	1
N2400-5104	Replacement Standard Platform for 26 Tubes up to 15 mm Diameter	1

NOTE: The Rotator Mixer is not available for sale in the UK.

Rocking Shaker & 3D Rocking Shaker



N2400-8010

N2400-8020

Shaken, not stirred!

STARLAB offers two similar shakers but with different movements: see-saw rocking or 3D. Both shakers have a fixed tilt angle and provide two shaking modes: continuous or timer. The digital speed and timer displays ensure ease of use. Both shakers are supplied with a platform with bungee cords. An alternative platform with clamping rolls is available separately, making these shakers suitable for a wide range of applications including blotting, cultivation and incubation techniques.

Features

- /// See-saw rocking or 3D mixing
- /// LCD displays for speed and time
- /// Two operating modes: continuous and timer
- /// Alternative platform available
- /// Small footprint

Specifications	
Speed and Timer Display	LCD
Speed Range	10 – 70 rpm
Permissible Ambient Temperature	4 – 40 °C
Permissible Relative Humidity	< 80 %
Operating Modes	Two: continuous and timer
Shaking Movement	N2400-8010: see-saw rocking N2400-8020: 3D mixing
Max. Load	N2400-8010: 10 kg N2400-8020: 5 kg
Tilt Angle	9 °
Timer	1 – 1199 mins (19 hrs, 59 mins)
Power	N2400-8010: 40 W N2400-8020: 50 W
Voltage	100 – 240 V
Frequency	50/60 Hz
Weight	9 kg
Dimensions (WxDxH)	N2400-8010: 370 x 420 x 106 mm N2400-8020: 370 x 420 x 200 mm

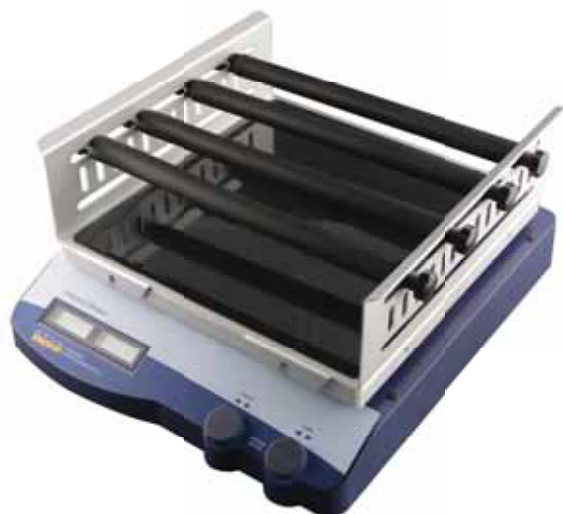
Rocking Shakers		
Cat. No.	Description	Pack Size
N2400-8010	Rocking Shaker	1
N2400-8020	3D Rocking Shaker	1
Accessories		
N2400-8011	Universal Platform with Clamping Rolls	1
N2400-8021	Universal/Replacement Platform with Bungee Cords	1

N2400-8010 and N2400-8020 are both supplied with a universal platform with bungee cords (N2400-8021). N2400-8011 and N2400-8021 can also be used on the orbital shaker (N2400-8030) opposite.



N2400-8011

Orbital Shaker



N2400-8030 (with N2400-8011)

Shake it all about!

The orbital shaker has two operating modes: continuous or timer. The digital speed and timer displays ensures ease of use. It provides the orbital shaking of your samples from a gentle agitation up to a vigorous orbital motion. The orbital shaker is suitable for a wide range of molecular biology or immunology applications. Two platforms are available and sold separately so you can customise your shaker to your requirements.

Features

- /// LCD displays for speed and time
- /// Two operating modes: continuous and timer
- /// Choice of platforms
- /// Holds load up to 7.5 kg
- /// Small footprint

Specifications	
Speed and Timer Display	LCD
Speed Range	100 – 500 rpm
Permissible Ambient Temp.	4 – 40 °C
Permissible Relative Humidity	< 80 %
Operating Modes	Two: continuous and timer
Max. Load	7.5 kg
RS232-Interface	Yes
Shaking Movement	Orbital
Orbital Diameter	10 mm
Timer	1 – 1199 mins (19 hrs 59 mins)
Power	30 W
Voltage	100 – 240 V
Frequency	50/60 Hz
Weight	13.5 kg
Dimensions (WxDxH)	420 × 370 × 100 mm

Orbital Shaker		
Cat. No.	Description	Pack Size
Shaker Base Unit		
N2400-8030	Orbital Shaker*	1
Accessories		
N2400-8011	Universal Platform with Clamping Rolls	1
N2400-8021	Universal Platform with Bungee Cords	1

***IMPORTANT:** N2400-8030 is NOT supplied with a platform. A platform must be purchased separately. N2400-8011 can also be used on the rocking and 3D rocking shakers (N2400-8010 / N2400-8020) opposite.



N2400-8011



N2400-8021

Mini Dry Bath Incubator



N2400-4020 (with N2400-4023)

Small, but powerful!

A small but powerful unit suitable for a range of applications: Restriction digests, denaturing DNA, NUB, coagulation studies, in-situ hybridisation, and Hot Start thermocycler reactions. The digital microprocessor controls the preset temperature of the metal block and the fast ramping of temperature saves your valuable time. Supplied with a transparent lid for temperature uniformity, the unit can also be used as a water bath.

Features

- ✦ Microprocessor controlled temperature and timer
- ✦ Digital display
- ✦ Easy, user calibration
- ✦ Small footprint
- ✦ Can also be used as a water bath

Specifications	
Controller	Digital microprocessor
Display	Digital
Operating Temperature	Ambient to 40 °C
Temp. Control Range (Dry Bath)	5 °C above ambient to 100 °C
Temp. Control Range (Water Bath)	5 °C above ambient to 90 °C
Temp. Increase	0.1 °C
Temp. Calibration	Yes
Temp. Uniformity	±0.2 °C at 37 °C
Temp. Accuracy	±0.25 °C at 37 °C
Timer	0 – 9999 mins, continuous
Safety Device	Leak-proof heating chamber and over-heating alarm protection
Heating Chamber Material	Moulded aluminium alloy coated with PTFE
Block Material	Aluminium alloy
Power Rating	AC input : 100 - 240 V-, 2 A, 50/60 Hz
Heating Power	50 W
Weight	0.6 kg
Dimensions (WxDxH)	125 x 153 x 97 mm

Mini Dry Bath		
Cat. No.	Description	Pack Size
N2400-4020	Mini Dry Bath Incubator*	1

* Metal Blocks are not included and must be purchased separately.

Metal Blocks for Mini Dry Bath



For 32 x 0.2 ml PCR Tubes

Cat. No: N2400-4021



For 12 x 0.5 ml Microcentrifuge Tubes

Cat. No: N2400-4022



For 12 x 1.5 ml Microcentrifuge Tubes

Cat. No: N2400-4023



All metal blocks are supplied with a screw-in handle for easy insertion and removal



For 12 x 1.5/2.0 ml Microcentrifuge Tubes

Cat. No: N2400-4024



For 6 x 15 ml Centrifuge Tubes

Cat. No: N2400-4025



For 2 x 50 ml Centrifuge Tubes

Cat. No: N2400-4026

Single & Dual Block Dry Bath Systems



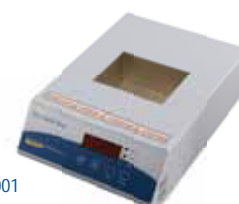
N2400-4002 (with N2400-4108)

Dry bath, wet bath!

Designed for a wide variety of applications, including restriction digests, denaturing DNA, NUB, melting agar, coagulation studies, in-situ hybridisation, and Hot Start thermocycler reactions, as well as having the additional function of a water bath. Available as single or dual block units, these systems offer great value and convenience for the user.

Features

- /// Microprocessor controlled timer and temperature
- /// Digital display
- /// Easy, user calibration
- /// Single or dual block units available
- /// Can also be used as a water bath



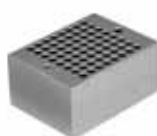
N2400-4001

Specifications	
Controller	Digital microprocessor
Display	Digital
Operating Temp.	5 °C above ambient to 150 °C
Temp. Increase	0.1 °C
Temp. Calibration	Yes
Temp. Uniformity	±0.2 °C
Temp. Accuracy	±0.2 °C
Timer	0- 999 minutes
Safety Device	Leak-proof heating chamber
Heating Chamber Material	Aluminium
Block Material	Aluminium
Block Dimensions	80 x 105 x 50 mm (except N2400-4108)
Voltage	220 V
Weight	2.6 kg (single) / 2.8 kg (dual)
Dimensions (WxDxH)	200 x 270 x 80 mm

Dry Bath Incubators		
Cat. No.	Description	Pack Size
N2400-4001	Dry Bath Heating System, Single Block, Digital*	1
N2400-4002	Dry Bath Heating System, Dual Block, Digital*	1

* Metal Blocks are not included and must be purchased separately.

Metal Blocks for Single & Dual Block Dry Bath Systems



For 64 x 0.2 ml PCR Tubes

Cat. No: N2400-4100



For 20 x 1.5/2.0 ml Microcentrifuge Tubes

Cat. No: N2400-4101



For 12 x 15 ml Centrifuge Tubes

Cat. No: N2400-4102



For 4 x 50 ml Centrifuge Tubes

Cat. No: N2400-4103



All metal blocks are supplied with a screw-in handle for easy insertion and removal



For 20 x 1.5 ml Microcentrifuge Tubes

Cat. No: N2400-4104



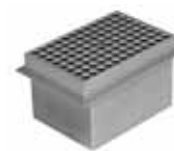
For 20 x 0.5 ml PCR or Microcentrifuge Tubes

Cat. No: N2400-4105



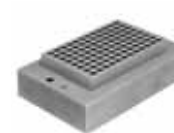
For 20 x 13 mm Tubes

Cat. No: N2400-4106



For 96-Well Plate (Single Block)

Cat. No: N2400-4107



For 96-Well Plate (Dual Block)

Cat. No: N2400-4108

Mini Fuge

N2631-0007



Get in a spin!

Small enough to fit on your benchtop for your own personal use. The strip rotor accepts either 16 single or two 8-strip 0.2 ml tubes; the standard rotor accepts six 0.5 ml or 1.5/2.0 ml microcentrifuge tubes. The rotors can be changed easily and quickly.

Features

- /// Supplied with two rotors: one for microcentrifuge tubes and one for PCR tubes
- /// Quick and easy rotor change
- /// Ideal for quick spin downs and microfiltration
- /// Starts and stops in seconds
- /// Small footprint

Specifications	
Speed	6000 rpm
RCF Standard Rotor	2,000 x g
RCF Strip Rotor	1177 x g
Voltage/Frequency	240 V, 50/60 Hz
Fuse	0.5 A, 250 V (F)
Dimensions (WxDxH)	150 x 150 x 117 mm

Microcentrifuge		
Cat. No.	Description	Pack Size
N2631-0007	Microcentrifuge	1

The microcentrifuge is supplied with two rotors – ‘Standard’ for use with 1.5/2.0 ml tubes, and ‘Strip’ for use with 0.2 ml tubes, plus six adaptors to convert the Standard rotor so it can be used with 0.5 ml tubes. A wrench for changing the rotors is also supplied.

STARLAB Easy Grip Caps

Visit www.starlabgroup.com to see our extensive range of Screw Cap Microtubes



Plate Centrifuge

N2631-0008



N2631-0018. Optional adaptor available for centrifuging 48-well plates and 0.2 ml PCR tubes and strips.

You spin me round!

The plate centrifuge makes the safe and quick spin down of droplets and condensation very easy. Just open the lid, insert the plates, close the lid and start. The centrifuge accepts all plates up to 25 mm high and an optional adaptor is available for centrifuging 48-well PCR plates and 0.2ml PCR tubes or strips.

Features

- /// Accommodates two plates
- /// Quick spin down of droplets and condensation
- /// Use before and after thermal cycling to increase PCR yield
- /// Accepts skirted, semi-skirted and non-skirted plates
- /// Less than quarter the size of most plate centrifuges
- /// Easy cleaning and maintenance

Plate Centrifuge

Cat. No.	Description	Pack Size
N2631-0008	Plate Centrifuge	1

Accessories

N2631-0018	Adaptor for 48-Well Plates and 0.2 ml Strips and Tubes	1
------------	--	---

Specifications

Speed	2500 rpm
RCF	500 x g
Rotor Capacity	Two plates (up to 25 mm high)
Voltage/ Frequency	230 V / 50-60 Hz
Fuse	0.5 AT
Weight	1.5 kg
Dimensions (WxDxH)	190 x 210 x 183 mm

STARLAB PCR Consumables

Explore our website for our wide range of PCR plates, tubes and strips: www.starlabgroup.com



AirClean® PCR Cabinets

Get results – not background!

AirClean® Systems PCR Workstations are designed as application solutions for the manipulation and amplification of RNA and DNA. Cross-contamination during amplification of RNA and DNA can lead to results that are inaccurate — results that cost you your valuable time and consume expensive reagents!

AirClean® Systems PCR Workstations offer a controlled environment for PCR applications to improve the odds for getting accurate results.

Dead Air Cabinets

These cabinets do not have a filter system. They provide a circulation-free environment with UV light sterilisation.

Laminar Flow Cabinets

Pre- and HEPA filters provide a Class 100 (ISO 5) vertical laminar flow environment in combination with UV light sterilisation.

Features

- ✦ UVTect™ microprocessor
- ✦ Polycarbonate design to reflect UV energy
- ✦ Folding sash for full and easy access
- ✦ Fluorescent light
- ✦ UV light
- ✦ Safety interlock switch that automatically cuts off the UV light when the sash is opened (and enables blower on Laminar Flow units)
- ✦ One piece construction ensures that no UV energy can escape
- ✦ Supplied ready-assembled – just plug and play!



***Pre-filtration of gross particles via the electrostatic prefilter prolongs the life of the HEPA filter**

***HEPA filter for Class 100 (ISO 5) particulate-free environment**

UVTect™ microprocessor controller monitors the life of the consumables so you can be sure both your filter and UV bulb is working effectively

Shelf situated directly under UV lamp so your critical items are close to the UV energy source

Sash overlap eliminates potential exposure to harmful shortwave UV irradiation

Constructed from polycarbonate which reflects UV light to efficiently irradiate all surfaces and objects within the cabinet. This also means that the unit will not turn yellow and crack over time in the way cabinets made from acrylic often do

Flat polypropylene base for easy and comfortable use during pipetting – no uncomfortable ledges to lean on!

Optional trolley stand available

Built-in safety switch automatically shuts off the UV light (and turns on the blower when the sash is opened on Laminar Flow models)

*Laminar Flow models only.

AirClean® PCR Cabinets

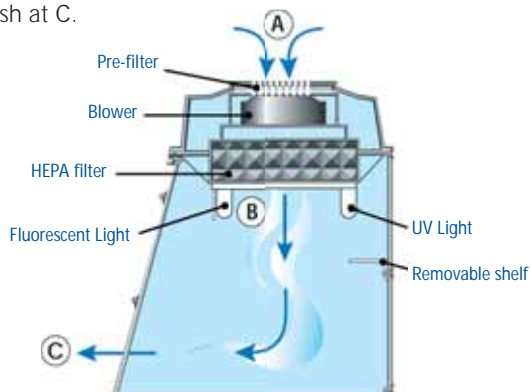


What does the UVTect™ do?

- /// UV timer to help save on bulb life
- /// UV bulb monitor to check the bulb's effectiveness and alert you when bulb life is getting low. UV bulbs glow purple even when they are not working effectively so with UVTect™, you can always be sure your UV bulb is working effectively
- /// HEPA filter monitor will alert you when the filter needs changing
- /// Variable speed blower control allows manual adjustment to the airflow for working with the most fragile of samples
- /// Lab event timer, and time and date display

How the "Laminar Flow" works

The UV light sterilises pipettes, pipette tips, tubes and flasks prior to working. Room air enters at **A**. The air is forced through the pre and HEPA filters to create a laminar flow. The clean, laminar flow air enters the cabinet at **B**, and exits through the sash at **C**.



	Dead Air Cabinets		Class 100 Laminar Flow Cabinets	
	32" Cabinet	48" Cabinet	32" Cabinet	48" Cabinet
Features and Specifications				
UVTect Controller	✓	✓	✓	✓
Lab Event Timer	✓	✓	✓	✓
Pre-Filter	✗	✗	✓	✓
HEPA Filter	✗	✗	✓	✓
HEPA Filter Life Monitor	✗	✗	✓	✓
Variable Speed Blow Control	✗	✗	✓	✓
Air Velocity	n/a	n/a	Digital	Digital
Noise Level	n/a	n/a	< 49 dba	< 53 dba
Fluorescent Bulb	✓	✓	✓	✓
UV Bulb	1 x 15 W, 254 nm	2 x 15 W, 254 nm	1 x 15 W, 254 nm	2 x 15 W, 254 nm
UV Light Timer	0 – 60 mins (digital)	0 – 60 mins (digital)	0 – 60 mins (digital)	0 – 60 mins (digital)
UV Bulb Life Monitor	✓	✓	✓	✓
UV Safety Interlock Switch	✓	✓	✓	✓
Voltage	110 V or 220 V	110 V or 220 V	110 V or 220 V	110 V or 220 V
Ship Weight (approx)	46 kg	68 kg	57 kg	82 kg
Ext. Dimensions (WxDxH)	813 x 610 x 762 mm	1219 x 610 x 813 mm	813 x 610 x 762 mm	1219 x 610 x 813 mm
Cabinet Ordering Information				
PCR Cabinets	N2540-8400	N2540-8500	N2530-8200	N2530-8300
Accessories Ordering Information				
Pre-Filters (Pack of 10)	n/a	n/a	N3942-7500	N3952-7518
HEPA Filters (Each)	n/a	n/a	N3942-7000	N3952-7018*
UV Bulbs (Pack of 4)	N2530-1500	N2530-1500	N2530-1500	N2530-1500
Trolley / Stand	N2520-3200	N2520-4800	N2520-3200	N2520-4800



Isogen Life Science B.V.
Veldzigt 2A
3454 PW De Meern
The Netherlands
Tel: +31 (0)30 688 0771
Fax: +31 (0)30 688 8009
E-mail: info@isogen-lifescience.com

Isogen Life Science N.V./S.A.
Stokthoekstraat 10A
9140 Temse
Belgium
Tel: +32 (0)9 351 48 79
Fax: +32 (0)9 277 93 03
E-mail: info@isogen-lifescience.com

Isogen Life Science s.l.u.
Paseo del Ferrocarril, 339-bajos 3º
Parque Empresarial del Mediterráneo
08860 Castelldefels – Barcelona - Spain
Tel: +34 936 644 894
Fax: +34 936 455 089
E-mail: clientes@isogen-lifescience.com

 **ISOGEN**
LIFE SCIENCE
www.isogen-lifescience.com